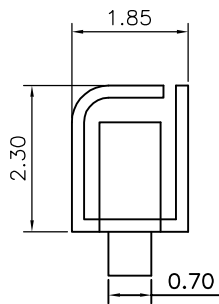


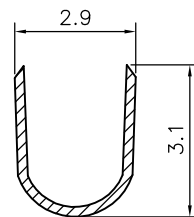
◆ SPECIFICATIONS

- Current rating: 3A AC, DC
- Voltage rating: 250V AC, DC
- Temperature range: -25°C ~ +85°C
- Insulation resistance: 1000MΩ Min.
- Withstanding voltage: 1000V AC/ minute.
- Contact resistance: 20mΩ Max.

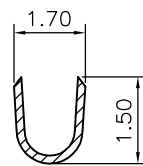
Material: Phosphor Bronze
 Finish: Plated Tin over Nickel
 Applicable wires: AWG #28~#22
 Insulation O.D 1.8mm Max.
 Suitable KR2501 series Housing
 Qty/reel: 7,000PCS



SECTION C-C



SECTION A-A



SECTION B-B

F	④			GENERAL TOLERANCE		UNIT: mm		DATE		TITLE:	
	③			. X ± 0.3	X° ± 1°	DRAWN:	闵昕皓	2017.09.13	仿JST XH2.50 Terminal		
	②			. XX ± 0.2	. X° ±	CHECKED:			VER.	SCALE:	1:1
	①	闵昕皓	2017.09.13	修正视图	. XXX ± 0.1	. XX° ±	APPROVED:		A1	SHEET:	1/1
	LTR	NAME	DATE	VERISION RECORD							

 东莞市康瑞电子有限公司
 Dongguan Konnra Electronics co., LTD.

PROJECT: B2501OT4AA200
 PART NO.: B2501OT4AA200
 DRAWING NO.: 2501T01-4-S