

◆ SPECIFICATIONS

- Current rating: 1.5A AC, DC
- Voltage rating: 50V AC, DC
- Temperature range: -25°C ~ +85°C
- Insulation resistance: 100MΩ Min.
- Withstanding voltage: 500V AC/ minute.
- Contact resistance: 20mΩ Max.

Material:

Insulator: PA9T UL 94V-0 Black

Contact: Phosphor bronze

Fitting Nail: Brass

Plating:

Contact: Gold Flash

Fitting Nail: Matte tin plated

Circuits: 2~8


Suitable: 1200 series Housing

Ordering Code:

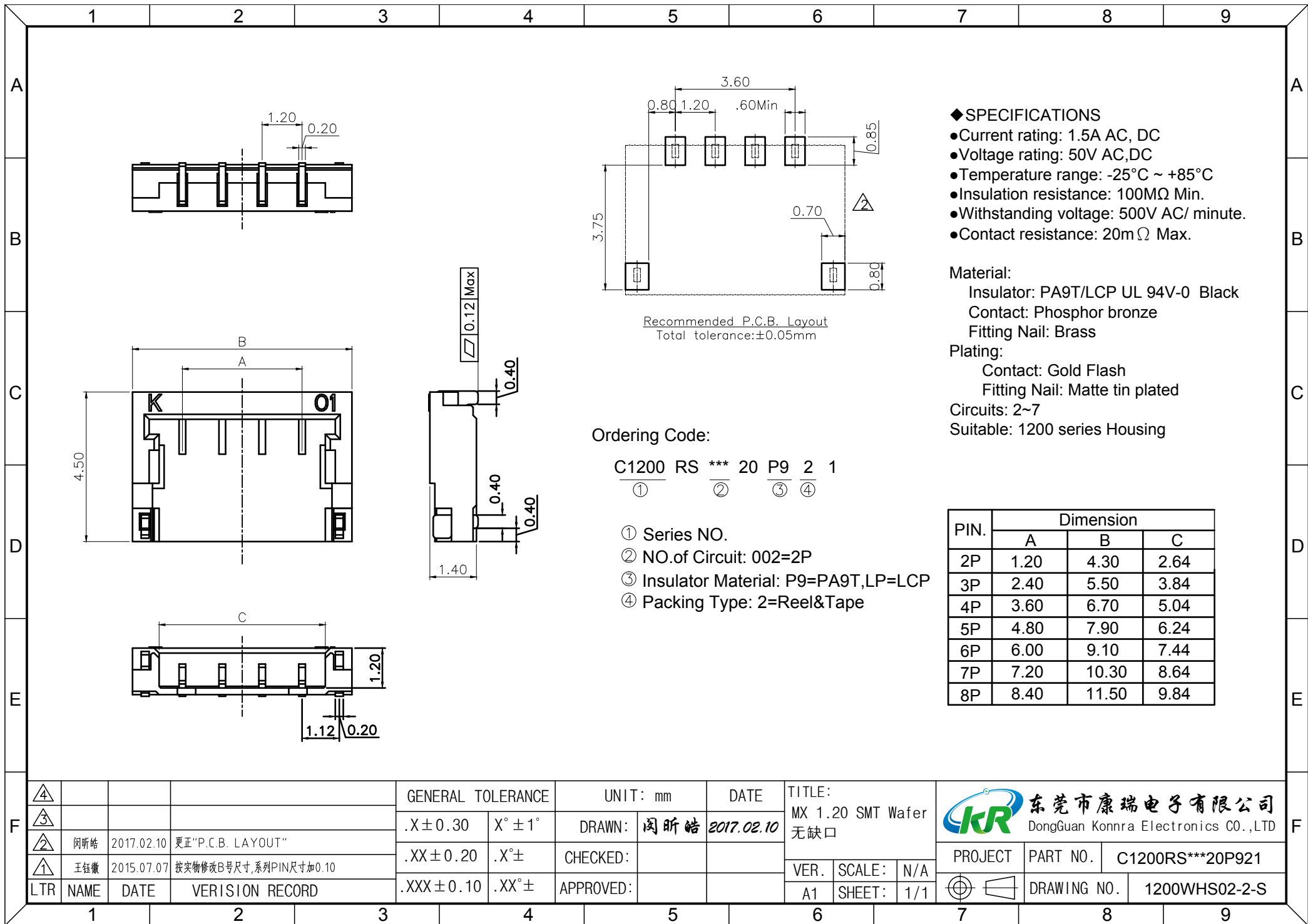
C1200 RS *** 20 P9 2 0
 ① ② ③ ④

- ① Series NO.
- ② NO.of Circuit: 002=2P
- ③ Insulator Material: P9=PA9T, LP=LCP
- ④ Packing Type: 2=Reel&Tape

PIN.	Dimension		
	A	B	C
2P	1.20	4.30	2.64
3P	2.40	5.50	3.84
4P	3.60	6.70	5.04
5P	4.80	7.90	6.24
6P	6.00	9.10	7.44
7P	7.20	10.30	8.64
8P	8.40	11.50	9.84

F	④			GENERAL TOLERANCE	UNIT: mm	DATE	TITLE: MX 1.20 SMT Wafer				
	③	闵昕皓	2018.02.05	.X ± 0.30	X° ± 1°	DRAWN: 闵昕皓	2017.02.10				
	②	闵昕皓	2017.02.10	.XX ± 0.20	.X° ±	CHECKED:					
	①	王钰徽	2015.07.07	按实物修改B号尺寸,系列PIN尺寸加0.10	.XXX ± 0.10	.XX° ±	APPROVED:		VER.	SCALE:	N/A
	LTR	NAME	DATE	VERISION RECORD					A1	SHEET:	1/1

PROJECT	PART NO.	C1200RS***20P920
DRAWING NO.		1200WHS01-2-S



Ordering Code:

C1200 RS *** 20 P9 2 1
 ① ② ③ ④

- ① Series NO.
- ② NO.of Circuit: 002=2P
- ③ Insulator Material: P9=PA9T,LP=LCP
- ④ Packing Type: 2=Reel&Tape

◆ SPECIFICATIONS

- Current rating: 1.5A AC, DC
- Voltage rating: 50V AC, DC
- Temperature range: -25°C ~ +85°C
- Insulation resistance: 100MΩ Min.
- Withstanding voltage: 500V AC/ minute.
- Contact resistance: 20mΩ Max.

Material:

Insulator: PA9T/LCP UL 94V-0 Black

Contact: Phosphor bronze

Fitting Nail: Brass

Plating:


Contact: Gold Flash

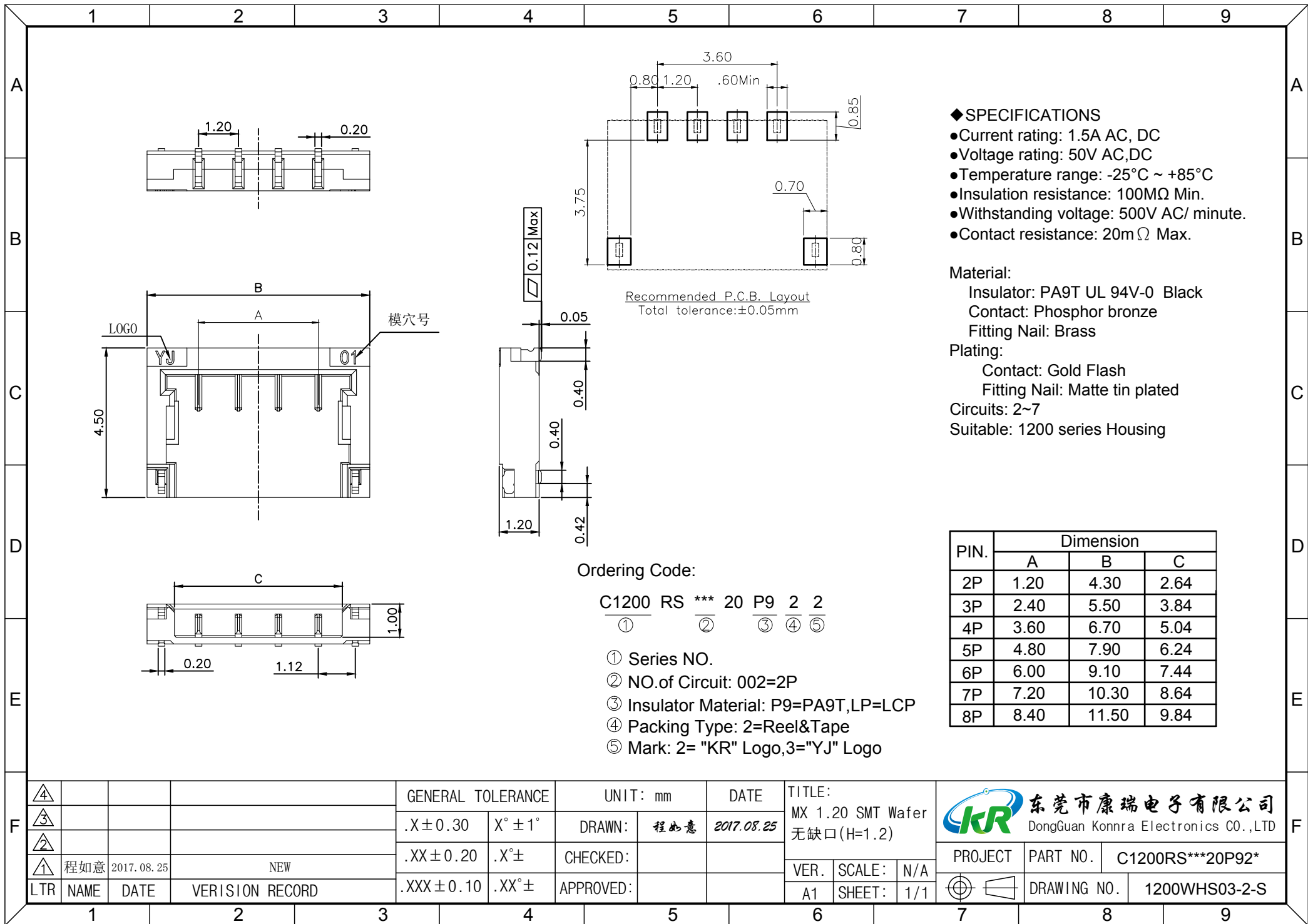
Fitting Nail: Matte tin plated

Circuits: 2~7

Suitable: 1200 series Housing

PIN.	Dimension		
	A	B	C
2P	1.20	4.30	2.64
3P	2.40	5.50	3.84
4P	3.60	6.70	5.04
5P	4.80	7.90	6.24
6P	6.00	9.10	7.44
7P	7.20	10.30	8.64
8P	8.40	11.50	9.84

F	④			GENERAL TOLERANCE	UNIT: mm	DATE	TITLE:	 东莞市康瑞电子有限公司 DongGuan Konnra Electronics CO.,LTD	
	③			.X ± 0.30	X° ± 1°	DRAWN: 闵昕皓	2017.02.10		MX 1.20 SMT Wafer
	②	闵昕皓	2017.02.10	更正"P.C.B. LAYOUT"		CHECKED:			无缺口
	①	王钰徽	2015.07.07	按实物修改B号尺寸,系列PIN尺寸加0.10		APPROVED:			
	LTR	NAME	DATE	VERISION RECORD	.XXX ± 0.10	.XX° ±	VER. SCALE: N/A	PROJECT PART NO. C1200RS***20P921	
							A1 SHEET: 1/1	DRAWING NO. 1200WHS02-2-S	



◆ SPECIFICATIONS

- Current rating: 1.5A AC, DC
- Voltage rating: 50V AC, DC
- Temperature range: -25°C ~ +85°C
- Insulation resistance: 100MΩ Min.
- Withstanding voltage: 500V AC/ minute.
- Contact resistance: 20mΩ Max.

Material:

Insulator: PA9T UL 94V-0 Black

Contact: Phosphor bronze

Fitting Nail: Brass

Plating:

Contact: Gold Flash

Fitting Nail: Matte tin plated

Circuits: 2~7

Suitable: 1200 series Housing

Ordering Code:

C1200 RS *** 20 P9 2 2
 ① ② ③ ④ ⑤

- ① Series NO.
- ② NO.of Circuit: 002=2P
- ③ Insulator Material: P9=PA9T, LP=LCP
- ④ Packing Type: 2=Reel&Tape
- ⑤ Mark: 2= "KR" Logo, 3="YJ" Logo

PIN.	Dimension		
	A	B	C
2P	1.20	4.30	2.64
3P	2.40	5.50	3.84
4P	3.60	6.70	5.04
5P	4.80	7.90	6.24
6P	6.00	9.10	7.44
7P	7.20	10.30	8.64
8P	8.40	11.50	9.84

④				GENERAL TOLERANCE	UNIT: mm	DATE	TITLE:
③				.X ± 0.30	X° ± 1°	DRAWN: 程如意	MX 1.20 SMT Wafer
②				.XX ± 0.20	.X° ±	2017.08.25	无缺口(H=1.2)
①	程如意	2017.08.25	NEW	.XXX ± 0.10	.XX° ±		VER. SCALE: N/A
LTR	NAME	DATE	VERSION RECORD		APPROVED:		A1 SHEET: 1/1

 东莞市康瑞电子有限公司
 DongGuan Konnra Electronics CO.,LTD

PROJECT	PART NO.	C1200RS***20P92*
DRAWING NO.		1200WHS03-2-S