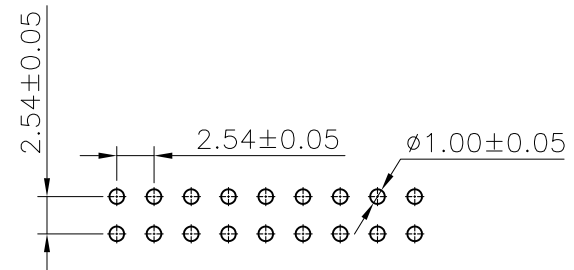
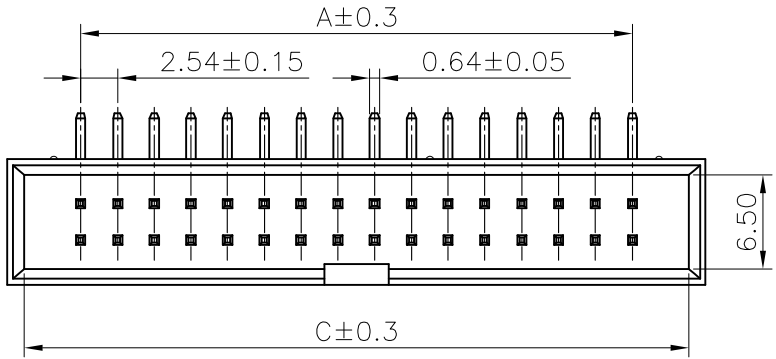


1 2 3 4 5 6 7 8 9

A



Recommended P.C.Board Layout

◆ SPECIFICATIONS

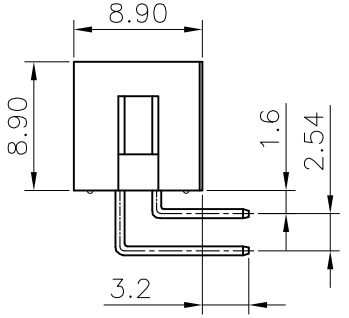
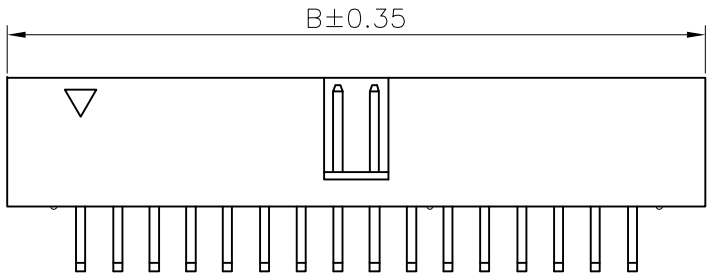
- Current rating: 3A AC, DC
- Voltage rating: 250V AC,DC
- Temperature range: -25°C ~ +85°C
- Insulation resistance: 1000MΩ Min.
- Withstanding voltage: 1500V AC/ minute.
- Contact resistance: 20mΩ Max.

Material:

- Insulator: PBT UL 94V-0
- Contact: Brass
- Plating: Gold plated over Nickel

B

C



PART No.	Dimension mm		
	A	B	C
C2545RD20320PB*0	5.08	15.24	12.92
C2545RD20420PB*0	7.62	17.78	15.46
C2545RD20520PB*0	10.16	20.32	18.00
C2545RD20620PB*0	12.70	22.86	20.54
C2545RD20720PB*0	15.24	25.40	23.08
C2545RD20820PB*0	17.78	27.94	25.62
C2545RD20920PB*0	20.32	30.48	28.16
C2545RD21020PB*0	22.86	33.02	30.70
C2545RD21220PB*0	27.94	38.10	35.78
C2545RD21320PB*0	30.48	40.64	38.32
C2545RD21520PB*0	35.56	45.72	43.40
C2545RD21720PB*0	40.64	50.80	48.48
C2545RD22020PB*0	48.26	58.40	56.10
C2545RD22520PB*0	60.96	71.10	68.80

E

F

△				GENERAL TOLERANCE	UNIT: mm	DATE	TITLE:		
③				.X±0.30	X°±1°	DRAWN: 朱佑武	杜邦 2.54 双排 90°		
△				.XX±0.20	.X°±	CHECKED:	筒牛		
△				.XXX±0.10	.XX°±	APPROVED:	VER.	SCALE:	N/A
LTR	NAME	DATE	VERISION RECORD				A	SHEET:	1/1


东莞市康瑞电子有限公司
 Dongguan Konnra Electronics co., LTD.

PROJECT	PART NO.	C2545RD***20PB*0
DRAWING NO.		2545WHD01-2-S

1 2 3 4 5 6 7 8 9