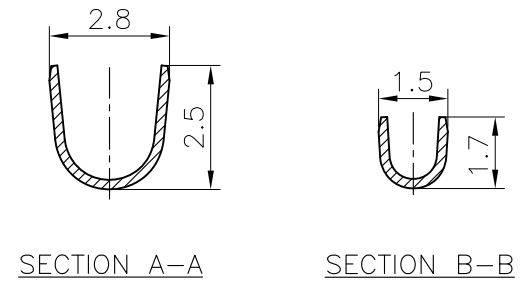



- ◆ SPECIFICATIONS
- Current rating: 3A AC, DC
 - Voltage rating: 250V AC,DC
 - Temperature range: -25°C ~ +85°C
 - Insulation resistance: 1000MΩ Min.
 - Withstanding voltage: 1000V AC/ minute.
 - Contact resistance: 30mΩ Max.

Material: Phosphor Bronze
 Applicable wire :
 AWG#22~#28
 Insulation O.D. 1.60mm Max.
 Plating: Tin Plated
 Mate: 2510 series Female Housing



F	⚠			GENERAL TOLERANCE		UNIT: mm	DATE	TITLE: SMP250 Crimp Style Male Terminal			 东莞市康瑞电子有限公司 Dongguan Konnra Electronics co., LTD.	PROJECTION	PART NO.	B2510FT1AA100
	③			.X±0.30	X°±1°	DRAWN: 朱佑武	2013.5.25							
	⚠			.XX±0.20	.X°±	CHECKED:		VER.	SCALE:	N/A	DRAWING NO.	2510TM01-1-S		
	⚠	LTR	NAME	DATE	VERISION RECORD	.XXX±0.10	.XX°±	APPROVED:	A	SHEET:			1/1	
	1	2	3	4	5	6	7	8	9					