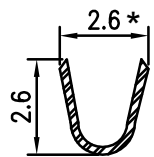
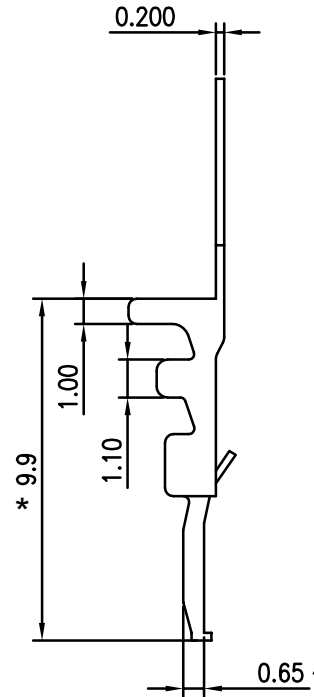
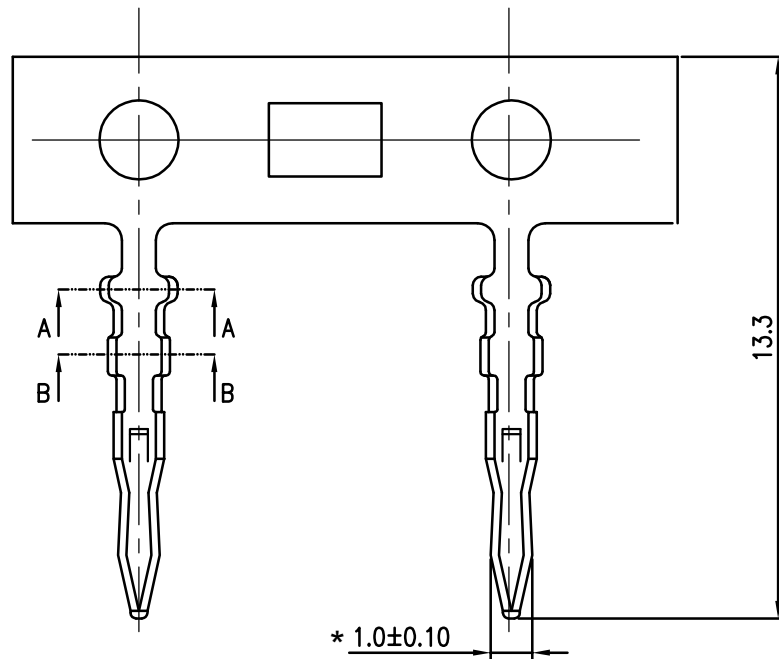
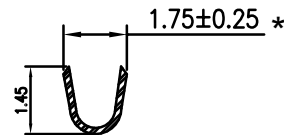


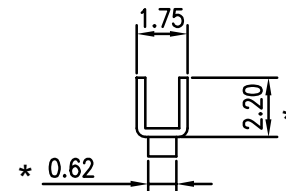
RoHS
COMPLIANT



A-A SECTION



B-B SECTION



SPECIFICATIONS

1. Current rating: 3A AC, DC
2. Voltage rating: 250V AC,DC
3. Temperature range: -40°C ~ +105°C
4. Insulation resistance: 1000MΩ Min.
5. Withstanding voltage: 800V AC/ minute.
6. Contact resistance: 10mΩ Max.

Applicable Wires:

AWG#22~#28

Insulation O.D. : 1.60mm MAX

Material: Brass

Plating: Tin plated over nickel

Suitable KR2508 series housing

Q'ty/reel: 10,000PCS

"*"表示重点管控尺寸

F				TOLERANCE	TITLE: SCN2.5 180° Terminal	DRAWN: Liujiangtian 2020.5.06		KONNRA 东莞市康瑞电子有限公司		
	A3			X.X ±0.30		CHECKED:	DongGuan Konnra Electronics Co., Ltd.			
	A2	更改料号及图框格式	LJT	2020.05.06	X.XX ±0.20	APPROVED:		PART NO. : T2508VBT0101B		
MARK	REVISION DESCRIPTION	SIGNATURE	DATE	X.XXX ±0.10	UNIT: mm	SCALE: N/A	SHEET: 1/1	PROJECTION	REV. : A2	DRAWING NO. : 2508TV101-B-S
	1	2	3	4	5	6	7	8	9	