

RoHS
COMPLIANT

◆ SPECIFICATIONS

- Current rating: 3A AC, DC
- Voltage rating: 250V AC, DC
- Temperature range: -25°C ~ +85°C
- Insulation resistance: 1000MΩ Min.
- Withstanding voltage: 1000V AC/ minute.
- Contact resistance: 20mΩ Max.

Material:

Insulator: PA9T UL 94V-0
Contact: Brass
Plating: Tin plated over Nickel
Circuits: 2~16
Mates: KR2502 series Housing

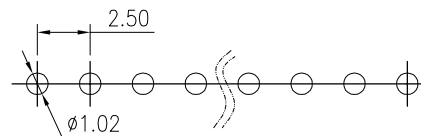
Ordering code:

C2502RD1**11T0101PA

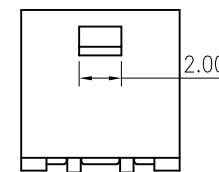
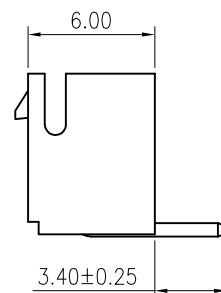
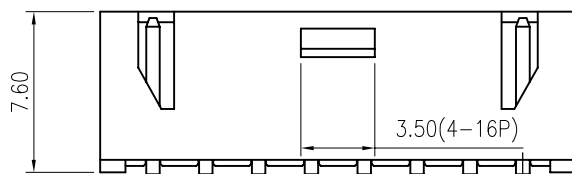
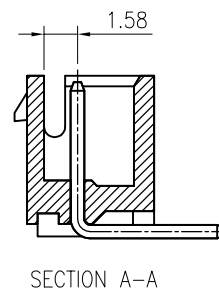
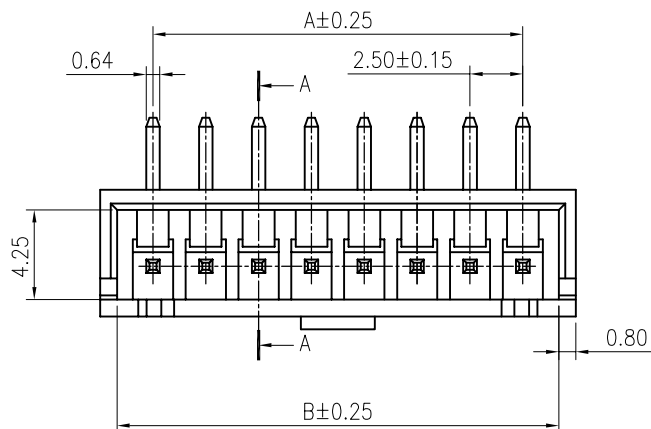
① ②

① Circuits: 102=2P 116=16P

② Material:
11:PA9T Natural



Recommended P.C.B. Layout
Total tolerance: ±0.05mm



2 PIN

PIN NO.	DIMENSIONS	
	A	B
02P	2.50	5.90
03P	5.00	8.40
04P	7.50	10.90
05P	10.00	13.40
06P	12.50	15.90
07P	15.00	18.40
08P	17.50	20.90
09P	20.00	23.40
10P	22.50	25.90
11P	25.00	28.40
12P	27.50	30.90
13P	30.00	33.40
14P	32.50	35.90
15P	35.00	38.40
16P	37.50	40.90

F	△3				TOLERANCE	TITLE:	DRAWN:	KONNRA 东莞市康瑞电子有限公司		
	△2				X.X ±0.30	XH2.5 带扣 DIP 90°	CHECKED:	DongGuan Konnra Electronics Co.,Ltd.		
	△1	更改料号及图框格式	Arvin	2020.01.16	X.XX ±0.20	WF	APPROVED:	PART NO.: C2502RD1**11T0101PA		
	LTR	REVISION DESCRIPTION	SIGNATURE	DATE	X.XXX ±0.10	UNIT: mm	SCALE: N/A	SHEET: 1/1	PROJECTION	VER.: A1
	1	2	3	4	5	6	7	8	9	