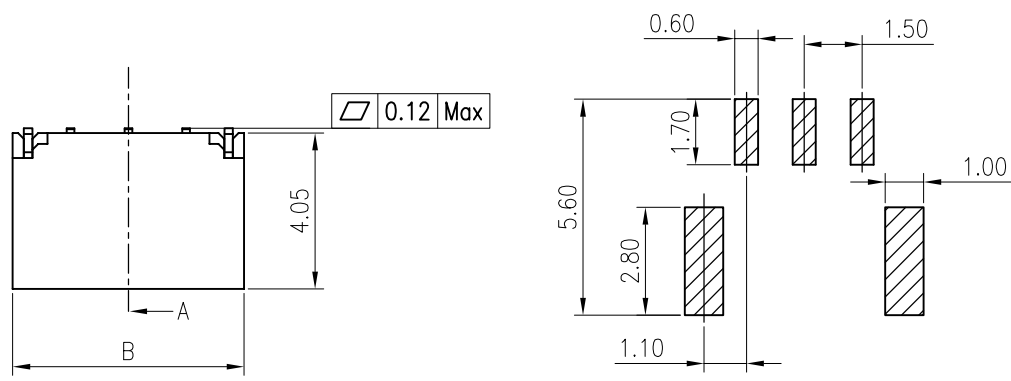


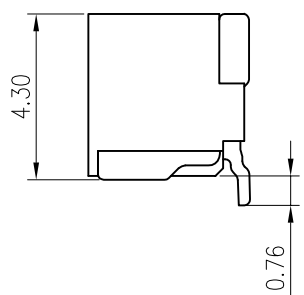
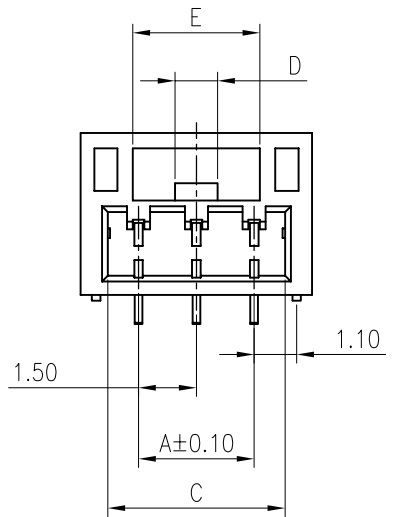
RoHS
COMPLIANT




SPECIFICATIONS
 Current rating: 1A AC, DC
 Voltage rating: 50V AC, DC
 Temperature range: -40°C ~ +105°C
 Insulation resistance: 100MΩ/ min.
 Withstanding voltage: 500V AC/ minute.
 Contact resistance: 30mΩ/ max.

Material:
 Insulator: PA9T UL94V-0
 Contact: copper alloy
 Finish: Matte-tin plated
 Mates With A1506 Series Housing





Recommended P.C.B. Layout
 Total tolerance: ±0.05mm



Ordering Code:

C1506VS ***11M0101RA 
 102: 2P
 106: 6P
 R: Reel & Tape
 11: PA9T Natural
 M01: Matte-tin plated

6P	7.50	10.90	9.50	6.55	4.35
5P	6.00	9.40	8.00	4.55	2.35
4P	4.50	7.90	6.50		
3P	3.00	6.00	4.60	3.30	1.60
2P	1.50	4.50	3.10	2.20	0.80
PIN数	A	B	C	D	E

F					TOLERANCE X.X ±0.30 X.XX ±0.20 X.XXX ±0.10 Angle ±2°	TITLE: GH1.5 SMT 180° WF	DRAWN: TLX 2020.05.14		KONNRA 东莞市康瑞电子有限公司 DongGuan Konnra Electronics Co., Ltd.		
							CHECKED:				
		更改料号及图框格式	TLX	2020.05.14			APPROVED:		PART NO.: C1506VS1**11M0101RA		
	MARK	REVISION DESCRIPTION	SIGNATURE	DATE			UNIT: mm	SCALE: N/A	SHEET: 1/1	PROJECTION 	REV.: A2
	1	2	3	4	5	6	7	8	9		