

P.C.Board Layout

- SPECIFICATIONS**
1. Current rating: 1A AC, DC
  2. Voltage rating: 150V AC,DC
  3. Temperature range: -40°C ~ +105°C
  4. Insulation resistance: 500M Ω Min.
  5. Withstanding voltage: 500V AC/ minute.
  6. Contact resistance: 30m Ω Max.

Material:

Insulator: PA66 UL 94V-0

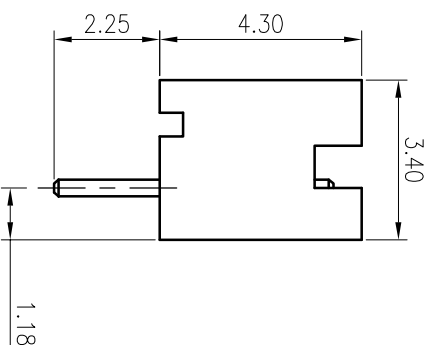
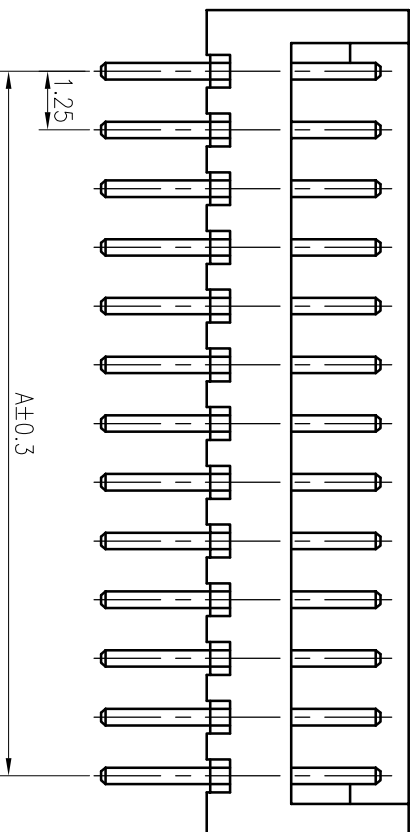
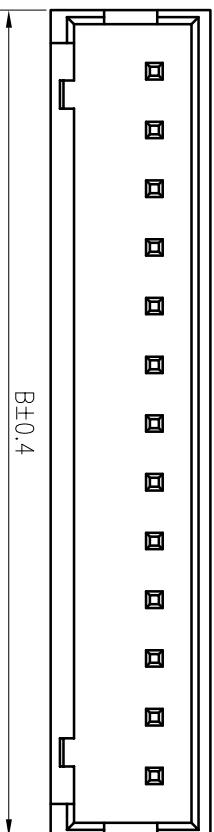
Contact: Brass

Plating: Tin plated over Nickel

Mate with KR1256 series Housing

**C1256VD \*\*\* 19 T01 01 PA**

No.of Circuits  102:2,115:15



Circuits	Dimensions	
	A	B
2	1.25	3.75
3	2.50	5.00
4	3.75	6.25
5	5.00	7.50
6	6.25	8.75
7	7.50	10.00
8	8.75	11.25
9	10.00	12.50
10	11.25	13.75
11	12.50	15.00
12	13.75	16.25
13	15.00	17.50
14	16.25	18.75
15	17.50	20.00

TOLERANCE		TITLE:	
X.X	±0.30	DFT3 DIP	单排 180°
X.XX	±0.20	Wafer	
X.XXX	±0.10		
Angle ±2°		UNIT: mm	SCALE: N/A

DRAWN: Lijingtian 2020.4.24
CHECKED:
APPROVED:

**KONNRA** 东莞市康瑞电子有限公司  
Dongguan Konnra Electronics Co., Ltd.

MARK	REVISION DESCRIPTION	SIGNATURE	DATE						
A2	更改料号及图框格式	LJT	2020.04.24						
1									
2									
3									
4									
5									
6									
7									
8									
9									

PART NO.: C1256VD\*\*\*19T0101PA  
REV.: A2  
DRAWING NO.: 1256WDD101-A-S