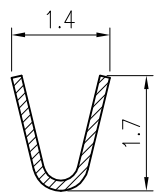
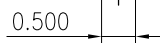
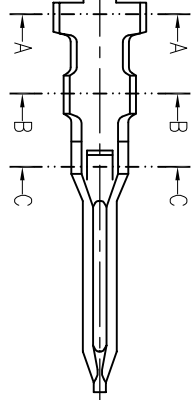
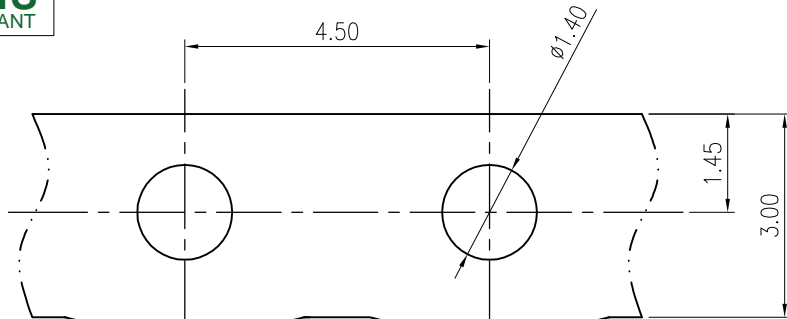
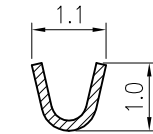


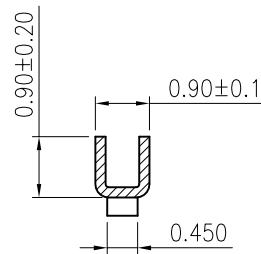
RoHS  
COMPLIANT



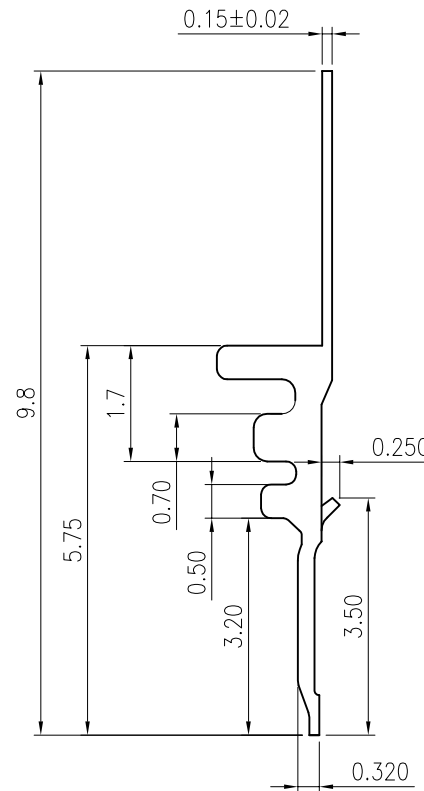
SECTION A-A



SECTION B-B



SECTION C-C



◆ SPECIFICATIONS

Current rating: 1A AC, DC  
Voltage rating: 125V AC, DC  
Temperature range: -40°C ~ +105°C  
Insulation resistance: 100MΩ/ min.  
Withstanding voltage: 250V AC/ minute.  
Contact resistance: 20m Ω/ max.

Material: PHOSPHOR BRONZE

Applicable wires:

Conductor size: AWG#28-#32

Insulation O.D.: 1.00mm Max.

Plating: Tin plated

Suitable: 1252 series Housing



MARK

REVISION	DESCRIPTION	SIGNATURE	DATE
A4			
A3			
A2	更改料号及图框格式	TLX	2020.03.20

TOLERANCE  
X.X ±0.30  
X.XX ±0.20  
X.XXX ±0.10  
Angle ±2°

TITLE:  
MX1.25 直插  
Terminal 加长针

UNIT: mm SCALE: N/A

DRAWN: TLX 2020.03.20

CHECKED:

APPROVED:

SHEET: 1/1 PROJECTION

KONNRA 东莞市康瑞电子有限公司  
DongGuan Konnra Electronics Co., Ltd.

PART NO.: T1252OPT0101A

REV.: A2 DRAWING NO.: 1252T01-A-S