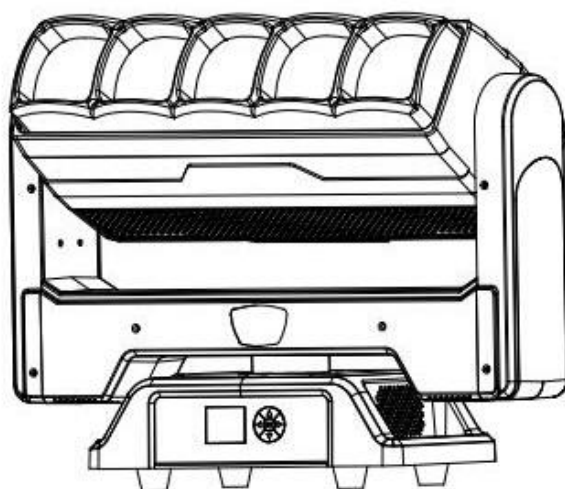


Instruction Manual

PROFESSIONAL SHOW LIGHT

LED SuperBar T60



Unpacking: Thank you for purchasing the T60. Every fixture has been thoroughly tested and has been shipped in perfect operating condition. Carefully check the shipping carton for damage that may have occurred during shipping. If the carton appears to be damaged, carefully inspect your fixture for any damage and be sure all accessories necessary to operate the unit has arrived intact. In the case damage has been found or parts are missing, please contact the manufacturer or your dealer for further instructions. Do not return this unit to your dealer without first contacting.

FOR YOUR OWN SAFETY, PLEASE READ THIS USER MANUAL CAREFULLY BEFORE POWERING OR INSTALLING VELLO T60 . SAVE IT FOR FUTURE REFERENCE.

Warning! To prevent or reduce the risk of electrical shock or fire, do not expose this unit to rain or moisture.

PLEASE consider that damages caused by manual modifications to the device are not subject to warranty.

Caution! There are no user serviceable parts inside this unit. Do not attempt any repairs yourself; doing so will void your manufactures warranty. In the unlikely event your unit may require service please contact the manufacturer or your dealer.

PLEASE recycle the shipping carton whenever possible.

General Instructions: To optimize the performance of this product, please read these operating instructions carefully to familiarize you with the basic operations of this unit. These instructions contain important safety information regarding the use and maintenance of this unit.

Features

- | | |
|------------------------------------|--|
| ● Multi-Colors | With smooth zoom |
| ● Color Strobe | Double-sided function |
| ● Electronic Dimming 0-100% | ● Daisy Chain Units Together in DMX Mode |
| ● DMX-512 protocol | |
| ● Master/Slave synchronization | ● With individual control |
| ● LCD operation menu with function | |

Safety Precautions

- To reduce the risk of electrical shock or fire, do not expose this unit to rain or moisture.
- Do not spill water or other liquids into or on to your unit.
- Be sure that the local power outlet match that of the required voltage for your unit.
- Do not attempt to operate this unit if the power cord has been frayed or broken. Do not attempt to remove or break off the ground prong from the electrical cord. This prong is used to reduce the risk of electrical shock and fire in case of an internal short.
- Disconnect from main power before making any type of connection.
- Do not remove the cover under any conditions. There are no user serviceable parts inside.
- Never operate this unit when it's cover is removed.
- Never plug this unit in to a dimmer pack.
- Always be sure to mount this unit in an area that will allow proper ventilation. Allow about 6" (15cm) between this device and a wall.

- Do not attempt to operate this unit, if it becomes damaged.
- This unit is intended for indoor use only; use of this product outdoors voids all warranties.
- During long periods of non-use, disconnect the unit's main power.
- Always mount this unit in safe and stable matter.
- Power-supply cords should be routed so that they are not likely to be walked on or pinched by items placed upon or against them, paying particular attention to the point they exit from the unit.
- Cleaning -The fixture should be cleaned only as recommended by the manufacturer. See "Cleaning" for details.
- Heat -The appliance should be situated away from heat sources such as radiators, heat registers, stoves, or other appliances (including amplifiers) that produce heat.
- The fixture should be serviced by qualified service personnel when:
 - A. The power-supply cord or the plug has been damaged.
 - B. Objects have fallen, or liquid has been spilled into the appliance.
 - C. The appliance has been exposed to rain or water.
 - D. The appliance does not appear to operate normally or exhibits a marked change in performance.

Set Up:


Power Supply: Before plugging your unit in, be sure the source voltage in your area matches the required voltage for the fixture, The model is Auto power supply, It is workable in 90-250V/50~60Hz. Please make sure your unit voltage matches the wall outlet voltage before attempting to operate you fixture.

Connection to the mains

For protection from electric shock, the fixture must be earthed!

Install a suitable plug on the power cord, note that the cores in the power cord are colored according to the following table. The earth has to be connected!

If you have any doubts about proper installation, consult a qualified electrician.

Core (EU)	Core (US)	Connection	Plug Terminal Marking
Brown	Black	Live	L
Light blue	White	Neutral	N
Yellow/Green	Green	Earth	

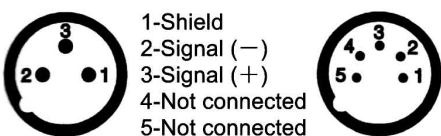
DMX512 connection

The fixture is equipped with both 3-pin or 5-pin XLR sockets for DMX input and output. The sockets are wired in parallel.

Only use a shielded twisted-pair cable designed for RS-485 and 3-pin or 5-pin XLR-plugs and connectors in order to connect the controller with the fixture or one fixture with another.

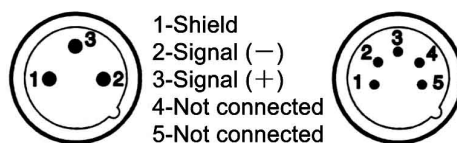
DMX-output

XLR mounting-sockets (rear view):



DMX-input

XLR mounting-plugs (rear view):



DMX Linking: To ensure proper DMX data transmission, when using several DMX fixtures try to use the shortest cable path possible. The order in which fixtures are connected in a DMX line does not influence the DMX addressing. For example; a fixture assigned a DMX address of 1 may be placed anywhere in a DMX line, at the beginning, at the end, or anywhere in the middle. When a fixture is assigned a DMX address of 1, the DMX controller knows to send DATA assigned to address 1 to that unit, no matter where it is located in the DMX chain.

Building a serial DMX-chain:

Connect the DMX-output of the first fixture in the DMX-chain with the DMX-input of the next fixture. Always connect one output with the input of the next fixture until all fixtures are connected.

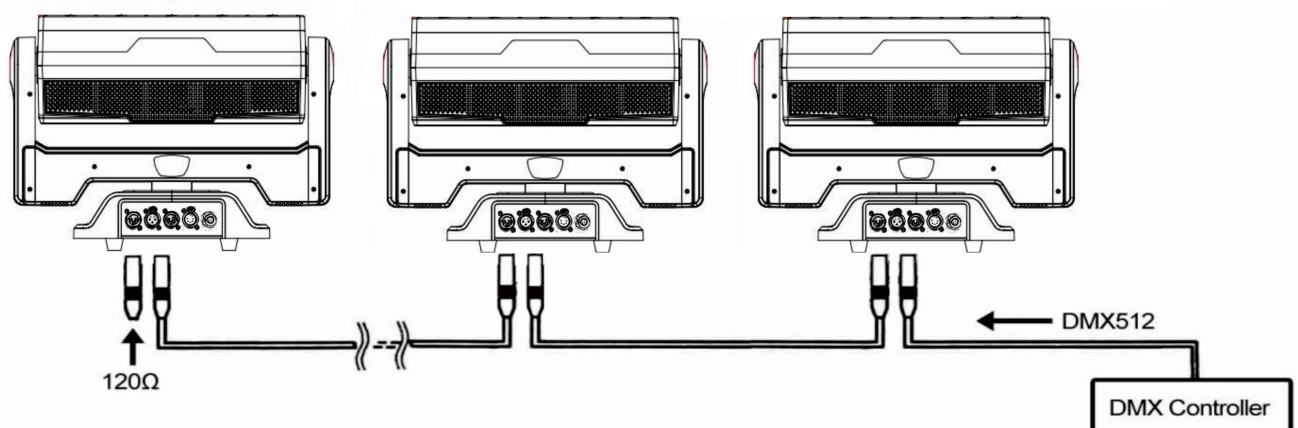
Caution: At the last fixture, the DMX-cable has to be terminated with a terminator. Solder a 120Ω resistor between Signal (–) and Signal (+) into a 3-pin XLR-plug and plug it in the DMX-output of the last fixture.

Operating Modes: You can use the LED superbar T60 in 3 ways:

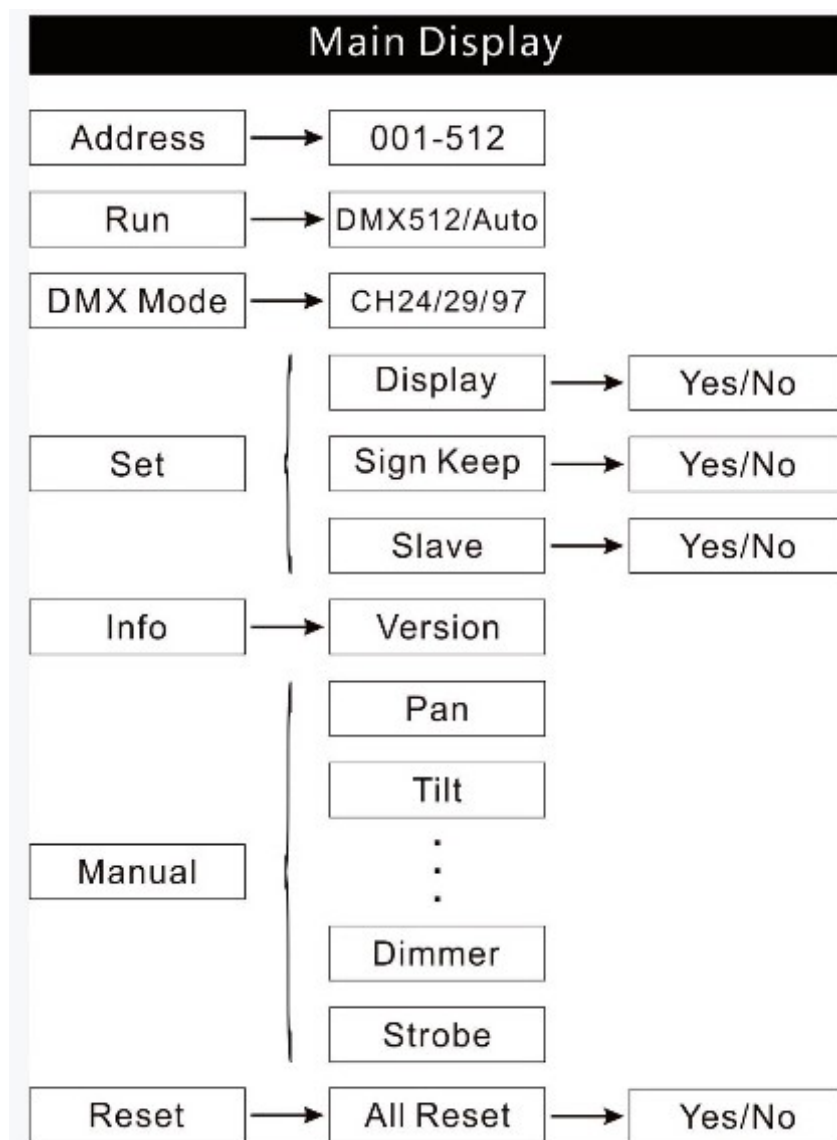
- Auto Mode - The unit automatically chase through the different colors and built-in programs.
- Slave Mode – The unit is available work by slave mode.
- DMX control mode - This function allows you to control each individual fixtures traits with a standard DMX 512 controller.

DMX Mode: Operating through a DMX controller give the user the freedom to create their own programs tailored to their own individual needs. This function also allows you to use your fixtures as beam lights.

1. This function will allow you to control each individual fixture's traits with a standard DMX 512 controller.
2. The fixture uses 24/29/97 DMX channels (RGBW version) to operate. Please see "DMX Values and Functions" for the DMX traits.
3. To run your fixture in DMX mode, plug in the fixture via the XLR connections to any standard DMX controller. Set your desired DMX address following the setup specifications that come with your DMX controller.



DISPLAY MENU:



DMX CHANNEL CHART:

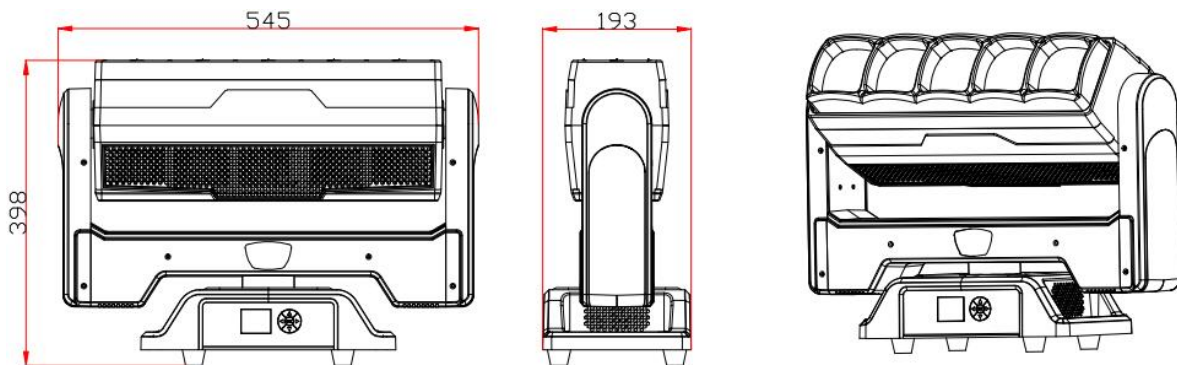
24 CH	29 CH	97 CH	Function	Value	Describe
1	1	1	Pan	0-255	0-100%
2	2	2	Pan Fine	0-255	0-100%
3	3	3	Tilt	0-255	0-100%
4	4	4	Tilt Fine	0-255	0-100%
*	5	5	Pan/Tilt Speed	0-255	0-100%
5	6	6	Zoom	0-255	0-100%
6	7	7	Pan Infinity	0-255	0-100%
7	8	8	Tilt Infinity	0-255	0-100%

8	9	9	Dimmer	0-255	0-100%
9	10	10	Strobe	0-19	No Function
				20-255	Strobe Slow-Fast
10	11	11	Red	0-255	0-100%
11	12	12	Green	0-255	0-100%
12	13	13	Blue	0-255	0-100%
13	14	14	White	0-255	0-100%
14	15	15	BackColor	0-10	No Function
				11-255	BackColor
15	16	16	BackColor Dimmer	0-255	0-100%
16	17	17	Effect	0-10	No Function
				11-20	Effect 1
			
				241-250	Effect 24
				251-255	Effect 1-24
17	18	18	Effect Speed	0-255	Slow-Fast
*	19	19	Back Light Dimmer	0-255	0-100%
18	20	20	Back Light Strobe	0-19	No Function
				20-255	Slow-Fast
19	*	*	Back Light Macro	0-10	No Function
				11-25	Red
				24-40	Green
				41-55	Blue
				56-70	White
				71-85	Red+Green
				86-100	Red+Blue
				101-115	Green+Blue
				116-130	Red+White
				131-145	Green+White
				146-160	Blue+White
				161-175	Red+Green+White

				176-190	Red+Blue+White
				191-205	Green+Blue+White
				206-255	Red+Green+Blue+White
*	21	21	Back Light-Red	0-255	0-100%
*	22	22	Back Light-Green	0-255	0-100%
*	23	23	Back Light-Blue	0-255	0-100%
*	24	24	Back Light-White	0-255	0-100%
20	25	25	Back Light BackColor	0-10	No Function
				11-255	Back Light Color
21	26	26	Back Light BackColor Dimmer	0-255	0-100%
22	27	27	Back Light Effect	0-10	No Function
				11-20	Effect 1
			
				241-250	Effect 24
				251-255	Effect 1-24
23	28	28	Back Light Effect Speed	0-255	Slow-Fast
24	29	29	Reset	0-250	No Function
				251-255	Reset All
		30	Main Light-Red 1	0-255	0-100%
		31	Main Light-Green 1	0-255	0-100%
		32	Main Light-Blue 1	0-255	0-100%
		33	Main Light-White 1	0-255	0-100%
				
		46	Main Light-Red5	0-255	0-100%
		47	Main Light-Green 5	0-255	0-100%
		48	Main Light-Blue 5	0-255	0-100%
		49	MainLight-White 5	0-255	0-100%
		50	Back Light-Red 1	0-255	0-100%
		51	Back Light-Green 1	0-255	0-100%
		52	Back Light-Blue 1	0-255	0-100%
		53	Back Light-White 1	0-255	0-100%

.....			
94	Back Light-Red 12	0-255	0-100%
95	Back Light-Green 12	0-255	0-100%
96	Back Light-Blue 12	0-255	0-100%
97	Back Light-White 12	0-255	0-100%

Chart Size (545 Lx193 Wx398H)mm



Rigging the fixture

Caution: Fixture may cause severe injuries when crashing down! If you have doubts concerning the safety of a possible installation, do not install the moving head!

Before rigging make sure that the installation area can hold a minimum point load of 10 times the fixture's weight.

When installing the device, make sure there is no highly inflammable material (decoration articles, etc.) in a distance of min. 1.0 m.

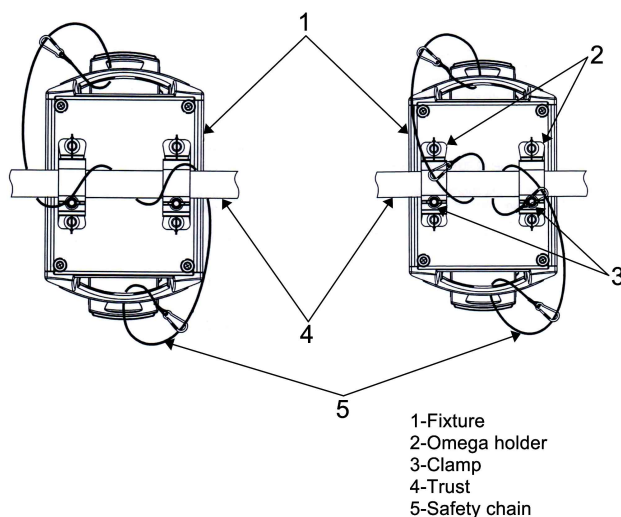
CAUTION! Use an appropriate clamp to ring the fixture on the truss.

Follow the instructions mentioned at the bottom of the base.

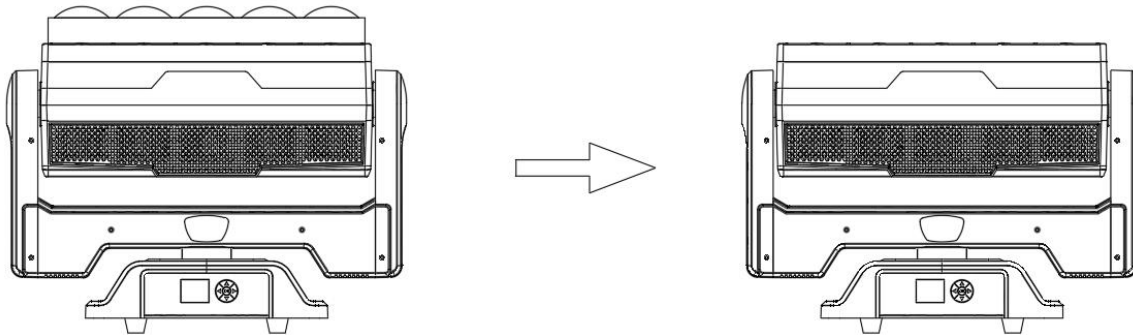
Make sure that the device is fixed properly! Ensure that the structure (truss) to which you are attaching the fixtures is secure.

Securing the fixture via one safety wire

Securing the fixture via two safety wires



CAUTION!!! Before packing, please get the zoom lens back inside.



Without this operation, there will be damage of the fixture!

Cleaning

Due to fog residue, smoke, and dust cleaning the internal and external optical lenses must be carried out periodically to optimize light output.

1. Use normal glass cleaner and a soft cloth to wipe down the outside casing.
2. Clean the external optics with glass cleaner and a soft cloth every 20 days.
3. Always be sure to dry all parts completely before plugging the unit back in.

Cleaning frequency depends on the environment in which the fixture operates (i.e. smoke, fog residue, dust, dew).

Unit not respond to DMX:

1. Check that the DMX cables are connected properly and are wired correctly (pin 3 is “hot”; on some other DMX devices pin 5 may be ‘hot’). Also, check that all cables are connected to the right connectors; it does matter which way the inputs and outputs are connected.

Technical Specifications

Electrical

Power supply:Electronic auto-ranging
Input voltage range:Supply 90-250V, 50/60Hz
Fuse:5A@230V
Power consumption:450W@230V

Optic

Light source: Osram (RGBW 60W) LED *5Pcs
Back Light: SMD 3535 White 3W*36Pcs
SMD 5050 RGB 50mW*72Pcs
Dimmer level: Linear dimming from 0-100%

3.5°-40° linear zoom
Millions mixing colors

Motorized

Movement

Pan/Tilt movement: **Infinity**
16 bit movement resolution
Automatic Pan/Tilt position correction

Construction:

LCD operation
Built-in demo sequences
Silent fans cooling
Strong three-phase motors
Stand-alone operation

Control:

DMX Channel: 24/29/97 Channels
Control Mode: DMX512, Master/Slave, Auto run
Firmware Upgrade via DMX link

Connection

Data In/Out: 3pin XLR (5pin XLR is optional)
Power In/Out: Power Connector in/out
Protection Rating: IP20
AC power input: 1.5m power cord with plug

Rigging

Mounting points: 2 pairs of 1/4-turn locks
Mounting horizontally or vertically via 2 Omega brackets

Features:

[Double-sided function: one side is wash, another side is strobe](#)

With zoom and strobe function

Linear motorized zoom

Beam mode: 5 LEDs can be controlled individually, one by one pixel

Strobe mode: 12 blocks can be controlled individually

Outstanding color mixing effect

Temperatures

Maximum ambient temperature: 45°C

Maximum housing temperature: 75°C

Minimum distances

Min. distance from flammable surfaces: 3.0m

Min. distance to lighted object: 2.0m

Dimensions/Weight:

Total heat dissipation: 1350 BTU/h (calculated)

Product size: 545 L*193 W*398 H mm

Weight (net): 13.6kg

Warranty: 1 Year

Note: All information is subject to change without prior notice.